
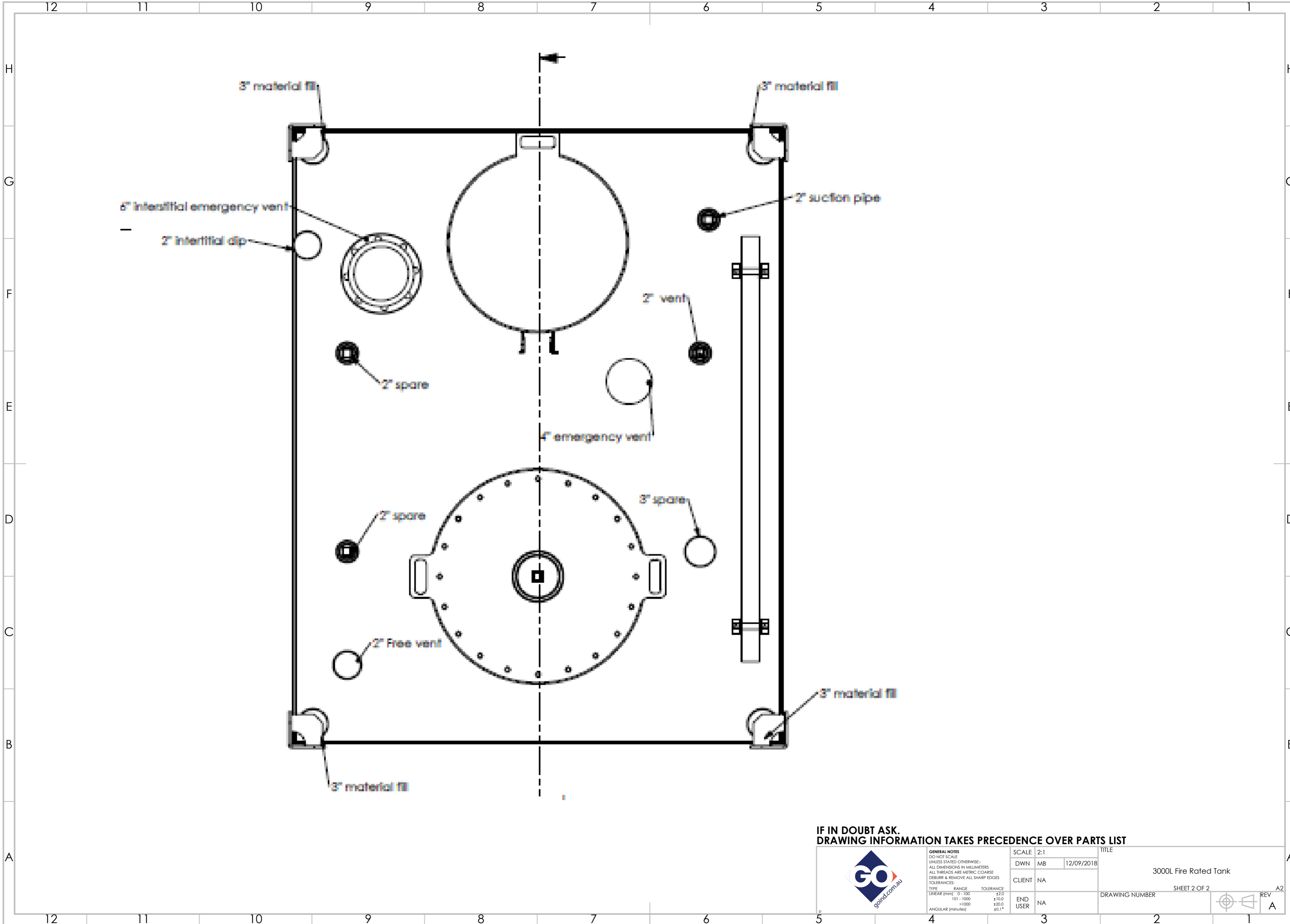


TANK DATA	
DESIGNED TO	AS1692, UL 142, UL2085
BUILT TO	UL142, UL2085
GROSS VOLUME	3,276l
SAFE FILL LEVEL	3,000l
PNEUMATIC TEST	21-35 kPa (INNER & OUTER)
PAINT - EXTERNAL	BASE - HEMPADUR 17360, 50µm INTERMEDIATE - HEMPADUR 15560, 100µm TOP - HEMPADUR 55610, 50µm
PAINT COLOUR	HEMPEL 10000 HIGH-GLOSS WHITE
WEIGHT	2,922 KG

**IF IN DOUBT ASK.
DRAWING INFORMATION TAKES PRECEDENCE OVER PARTS LIST**

	SCALE	2:1	TITLE	
	DO NOT SCALE	DWN	MB	12/09/2018
GENERAL NOTES UNLESS STATED OTHERWISE:- ALL DIMENSIONS IN MILLIMETERS ALL THREADS ARE METRIC COARSE DEBURR & REMOVE ALL SHARP EDGES TOLERANCES: TYPE RANGE TOLERANCE LINEAR (mm) 0-100 ±2.0 101-1000 ±10.0 >1000 ±20.0 ANGULAR (minutes) ±0.1°	CLIENT	NA		
	END USER	NA	DRAWING NUMBER	
			SHEET 1 OF 2	REV A
			3000L Fire Rated Tank	



**IF IN DOUBT ASK.
DRAWING INFORMATION TAKES PRECEDENCE OVER PARTS LIST**



GENERAL NOTES
DO NOT SCALE
UNLESS STATED OTHERWISE:-
ALL DIMENSIONS IN MILLIMETERS
ALL THREADS ARE METRIC COARSE
DEBURR & REMOVE ALL SHARP EDGES
TOLERANCES:
TYPE RANGE TOLERANCE
LINEAR (mm) 0 - 100 ±2.0
101 - 1000 ±10.0
> 1000 ±20.0
ANGULAR (minutes) ±0.1*

SCALE	2:1
DWN	MB 12/09/2018
CLIENT	NA
END USER	NA

TITLE	3000L Fire Rated Tank
DRAWING NUMBER	SHEET 2 OF 2
REV	A

