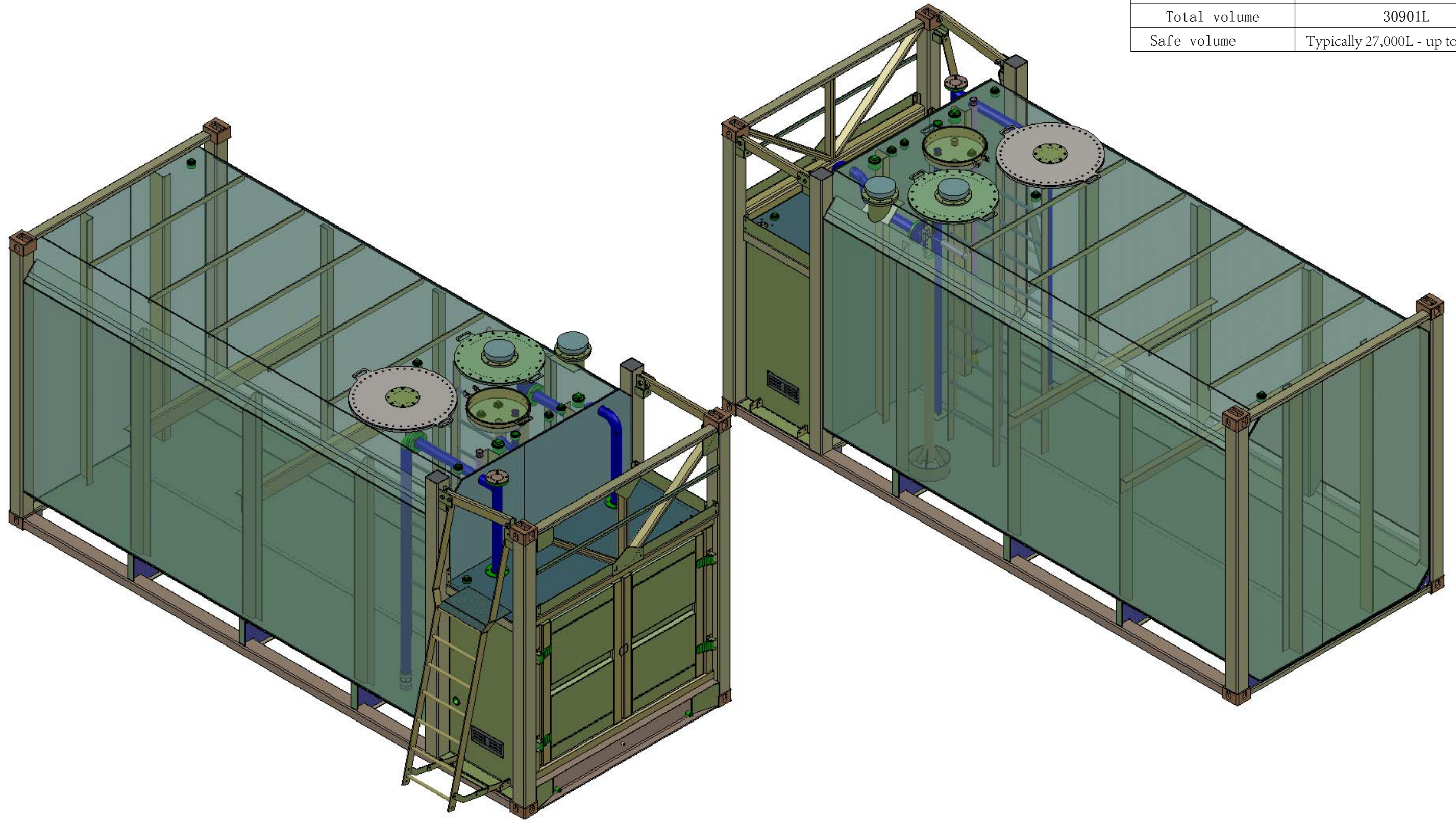


| Tank | |
|---------------------|----------------------------------|
| Content | Diesel |
| External size (LWH) | 6058x2438x2896mm |
| Internal size (LWH) | 4972x2374x2690mm |
| Total volume | 30901L |
| Safe volume | Typically 27,000L - up to 29350L |



| | | | | | |
|------|-------|-----------|--------|----------|-----------|
| 07 | | | | | |
| 06 | | | | | |
| 05 | | | | | |
| 04 | | | | | |
| 03 | | | | | |
| 02 | | | | | |
| 01 | | | | | |
| REV: | DATE: | REVISION: | DRAWN: | CHECKED: | APPROVED: |



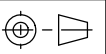
Material:
Weight: 7568.96KG

DRAWN: SAVING DATE:
CHECKED: DATE:
CLIENT: DATE:
APPROVED: DATE:

TITLE:
CON-30 SELF BUNDED TANK
DRAWING NO. :
PURCHASE ORDER NO. :

REV:
SHEET:
1 of 15
Scale:
No scale

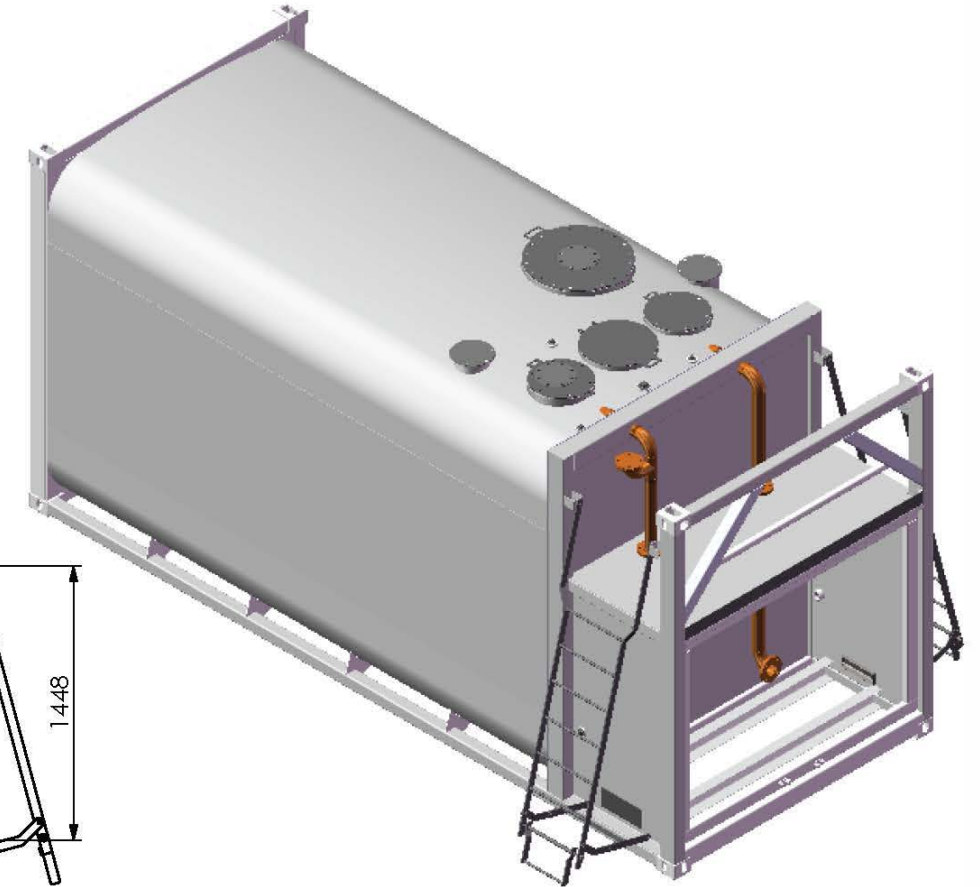
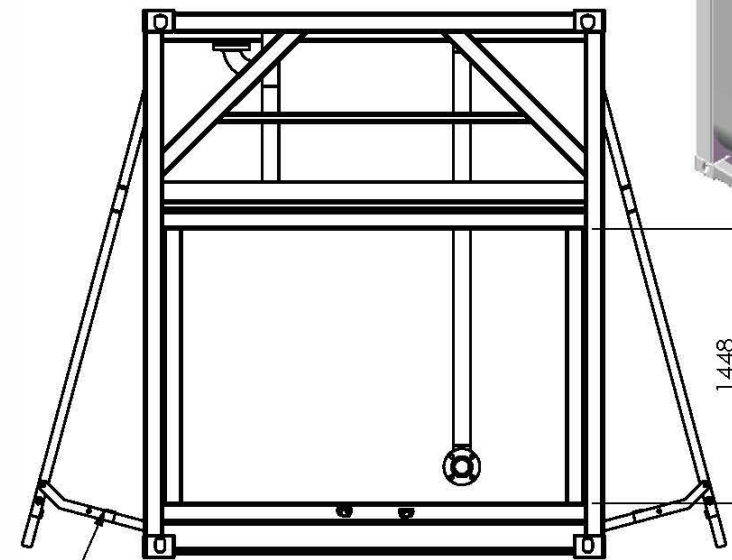
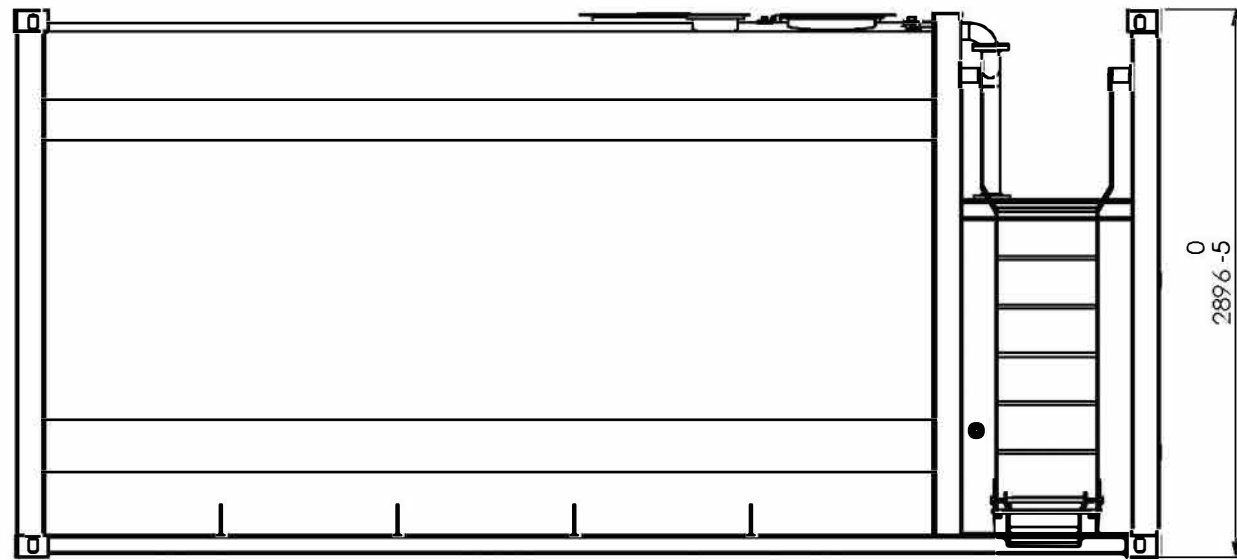
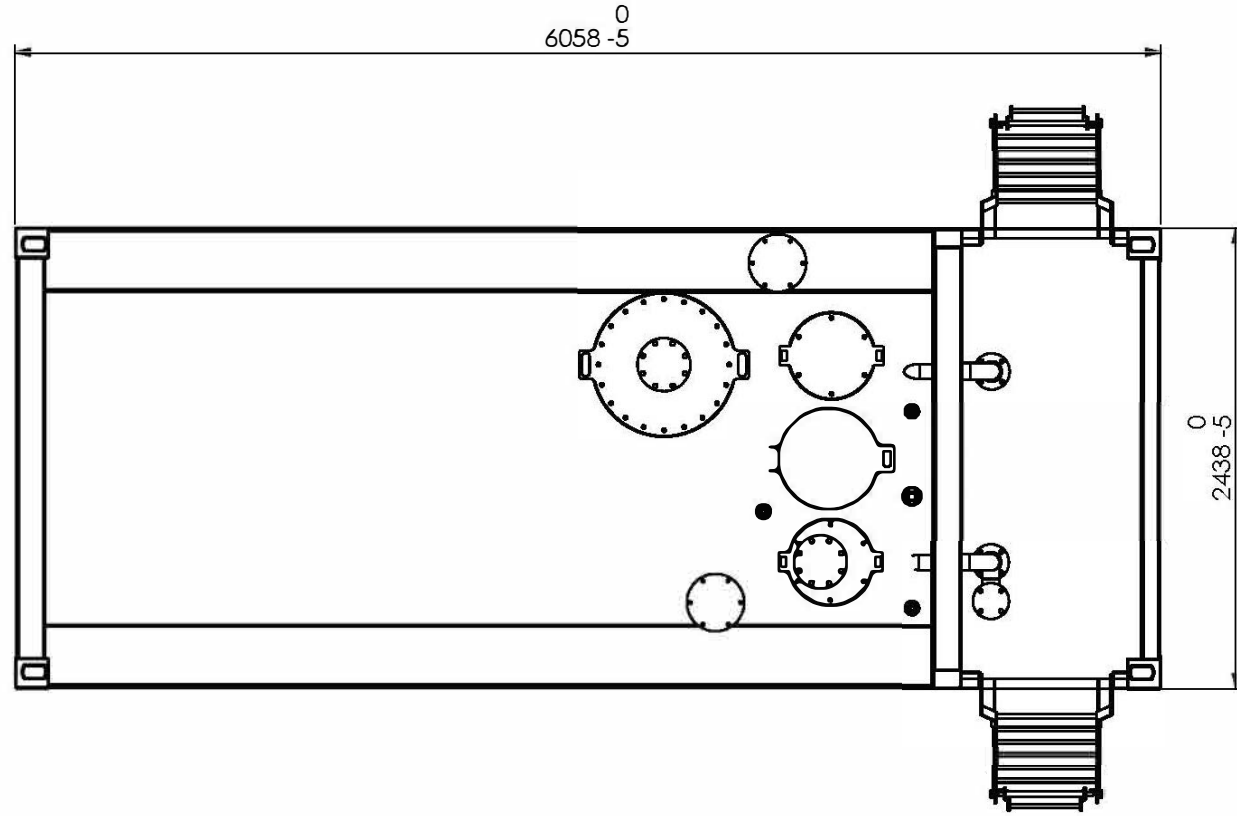
A3



DO NOT SCALE - IF IN DOUBT ASK

TANK DATA

| | |
|------------------|-----------------------------------|
| TANK CONTENTS: | DIESEL / ULP WITH FLAMMABLE KIT |
| DESIGNED TO: | AS1940 / AS1692 / UL142 |
| BUILT TO: | AS1692,CAT.3 / UL142 |
| TESTED TO: | UL142 |
| TEST PRESSURE: | 21 kPa |
| CORROSION ALLOW. | 0mm |
| GROSS VOLUME: | 30,901 L |
| SAFE FILL LEVEL | up to 29350L |
| N.D.T. | REFER FABRICATION & ASSEMBLY PLAN |
| TOTAL MASS: | 6472 kg |

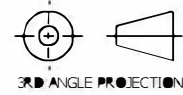


1 x AS1657 ACCESS LADDER SUPPLIED, REVERSABLE, BOTH SIDES SHOWN
HAND RAIL INSERT PROVIDED FOR OTHER SIDE

LOCKABLE DOORS NOT SHOWN FOR CLARITY

| Rev. No. | ZONE | Revision | Date | By | Checked |
|----------|------|-------------------|----------|----|---------|
| C | - | INFORMATION | 02.11.15 | ND | |
| B | - | INFORMATION | 23.10.15 | ND | |
| A | - | ISSUED FOR REVIEW | 20.10.15 | KG | |

DO NOT SCALE
DIMENSIONS ARE IN MILLIMETRES
UNLESS OTHERWISE NOTED

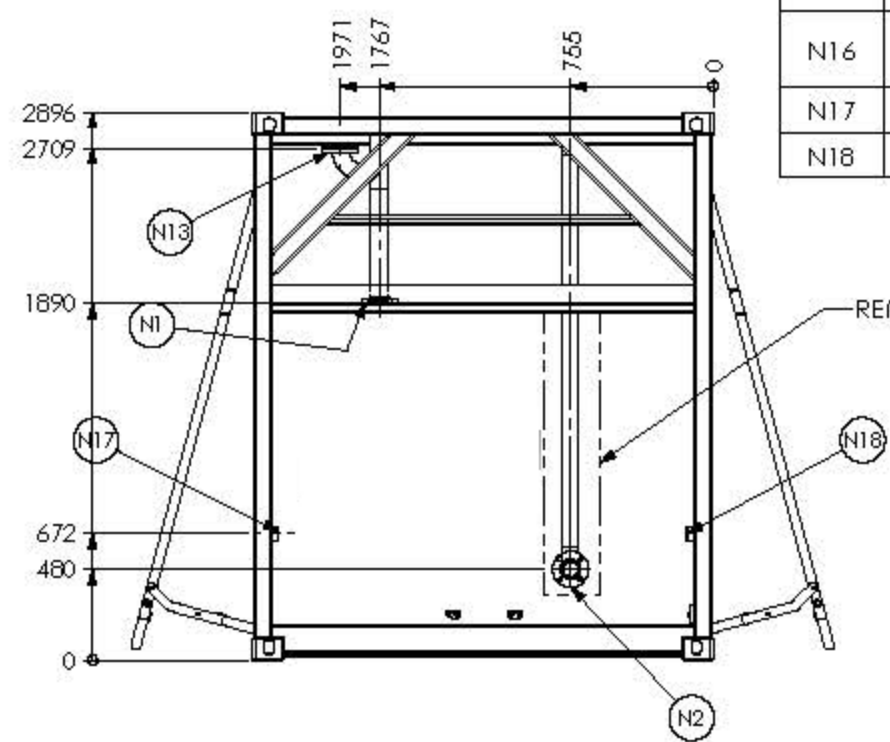
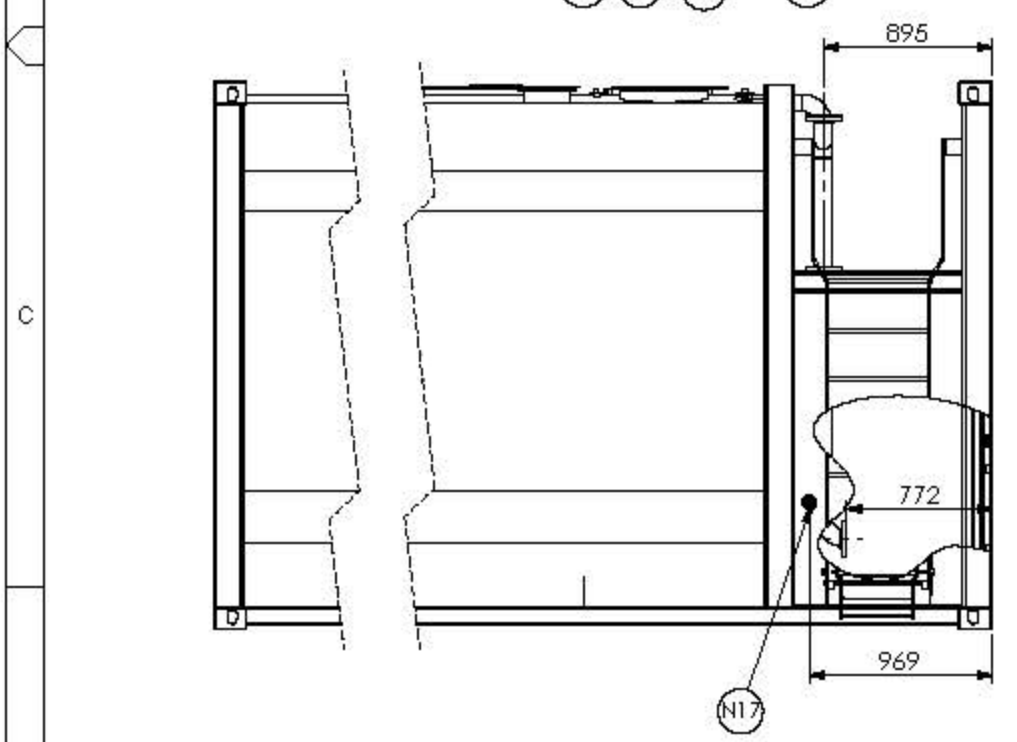
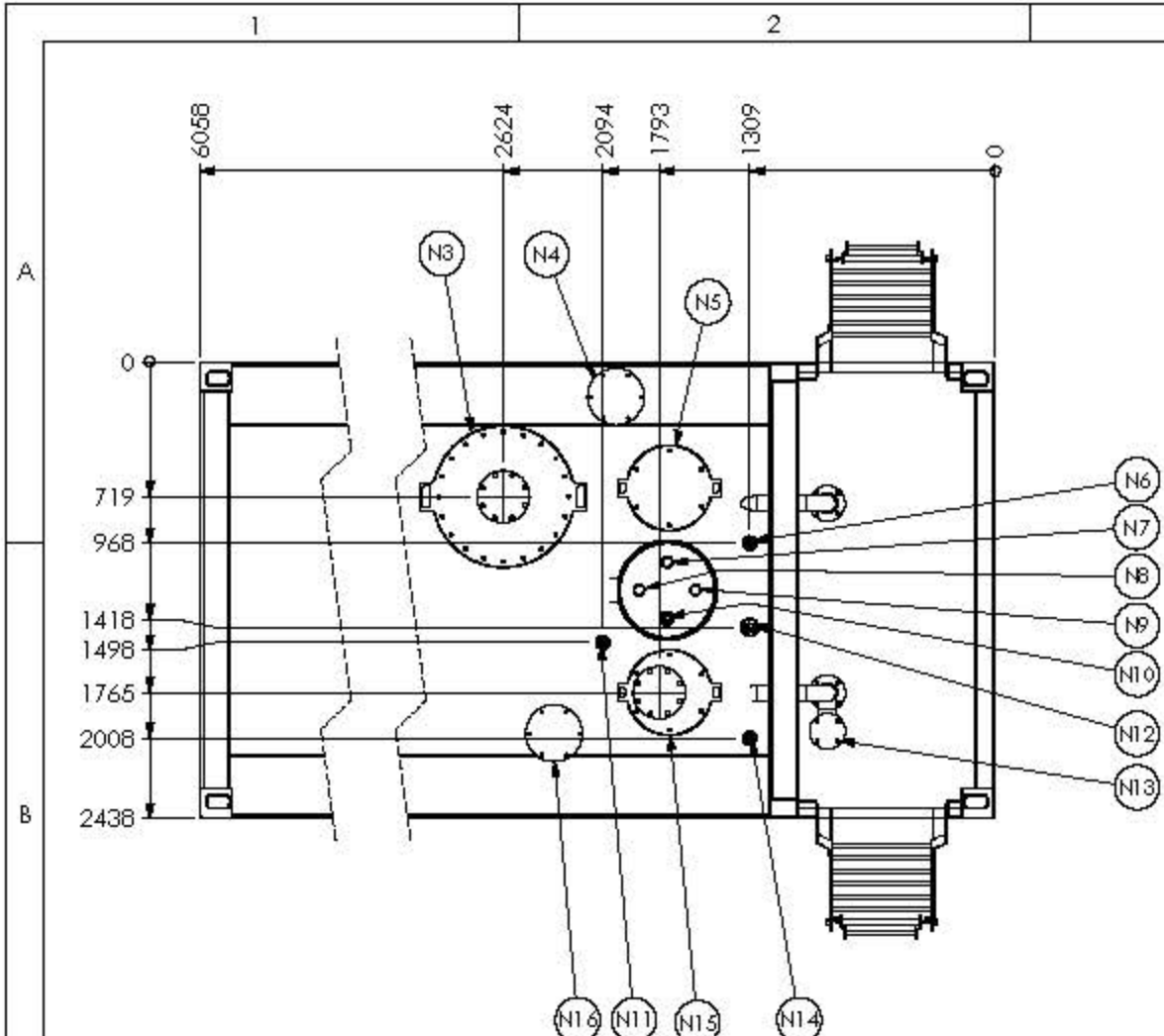


THIS DRAWING, INCLUDING INFORMATION SHOWN THEREIN IS
CONFIDENTIAL
It is loaned to a supplier for exclusive use by the supplier reproduction, exhibition, or use for any other purpose, or by any other person is not authorised. In the interests of development we reserve the right to modify, design equipment and accessories. dimensional, weight and performance data is to be understood as within appropriate tolerances.



| | | |
|-----------------------------|------------------|-----------|
| Client: | Drawn: KG | Checked: |
| Title: | Date: 26.10.15 | Approved: |
| GO 30,000L Self Bunded Tank | Drawing Number: | |
| | Sheet No: 1 of 2 | |
| | Scale: NTS | Rev: C |
| | | A3 |

DO NOT SCALE - IF IN DOUBT ASK

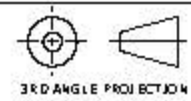


| NOZZLE NO. | SIZE | CONNECTION TYPE | DESCRIPTION |
|------------|-------|-----------------------|--|
| N1 | DN80 | ANSI CLASS 150 FLANGE | SUCTION C/W DN80 PIPE 110mm FROM FLOOR & ANTI-SYPHON VALVE |
| N2 | DN80 | ANSI CLASS 150 FLANGE | FILL PIPE C/W DN80 PIPE W/ ELBOW 44mm FROM FLOOR & OVERFILL PROTECTION VALVE AND SPOOL |
| N3 | 600 | MANWAY | 600mm MANWAY C/W DN150 ANSI CLASS 150 FLANGE FOR SUB PUMP |
| N4 | DN200 | ANSI CLASS 150 FLANGE | INTERSTITIAL SPACE EMERGENCY VENT |
| N5 | 350 | HATCH | 350mm INSPECTION HATCH |
| N6 | DN50 | BSP-F x 50 LONG | OVERFILL WARNING ALARM |
| N7 | DN50 | BSP-M x 35 LONG | PRIMARY TANK DIP C/W DN50 PIPE 25mm HIGH OPENING FROM DIP STRIKE |
| N8 | DN50 | BSP-M x 35 LONG | INTERSTITIAL SPACE DIP C/W DN50 PIPE THROUGH INTERNAL FLOOR |
| N9 | DN50 | BSP-M x 35 LONG | SUCTION SPEAR, DN50 PIPE 3mm FROM MAIN FLOOR INTO DISHED SUMP C/W THREADED CAP |
| N10 | DN50 | BSP-F x 50 LONG | SPARE |
| N11 | DN50 | BSP-F x 50 LONG | SPARE / GAUGE / VENT |
| N12 | DN80 | BSP-F x 75 LONG | SPARE / GAUGE / VENT |
| N13 | DN80 | ANSI CLASS 150 FLANGE | SUCTION PRIMING PORT / SUBMERSIBLE PUMP CONNECTION |
| N14 | DN50 | BSP-F x 50 LONG | SPARE / GAUGE |
| N15 | 350 | HATCH | 350mm INSPECTION HATCH C/W DN150 ANSI CLASS 150 FLANGE FOR SUB PUMP |
| N16 | DN200 | ANSI CLASS 150 FLANGE | PRIMARY TANK EMERGENCY VENT |
| N17 | DN50 | BSP-F x 50 LONG | SPARE (INTO PUMP BAY) / EXTERNAL ELECTRICALS |
| N18 | DN50 | BSP-F x 50 LONG | SPARE (INTO PUMP BAY) / EXTERNAL ELECTRICALS |

BSP-F: BSP FEMALE THREAD
BSP-M: BSP MALE THREAD

| Rev. No. | ZONE | Revised | Date | By | Checked |
|----------|------|-------------------|----------|----|---------|
| C | - | INFORMATION | 02.11.15 | ND | |
| B | - | INFORMATION | 23.10.15 | ND | |
| A | - | ISSUED FOR REVIEW | 20.10.15 | GS | |

DO NOT SCALE
DIMENSIONS ARE IN MILLIMETRES
UNLESS OTHERWISE NOTED



Client:
Title:
GO 30,000L Self Bunded Tank

| | | | |
|------------------|----------|-----------|---|
| Drawn | KG | Checked | |
| Date: | 26.10.15 | Approved | |
| Drawing number: | | | |
| Sheet No: 2 of 2 | | | |
| Scale: | NTS | Rev: | C |
| | | A3 | |