



PA1 - PA2 - PA3



DIESEL

PA1 70



PA2 80-100



PA3 150

| FEATURES | PA1 70 | PA2 80 | PA2 100 | PA3 150 |
|--------------------------------------|---|----------------|----------------|----------------|
| Voltage AC [V, Hz] | 230, 50/60 | 230, 50 | 230, 50/60 | 230, 50 |
| Current max [A] | 2,9/3,5 | 4,1 | 4,5/5 | 14,5 |
| Power [W] | 550/650 | 750 | 805/900 | 3300 |
| Motor protection | IP55 | IP55 | IP55 | IP55 |
| On/Off Switch | Yes | Yes | Yes | Yes |
| Cable [m] | 2 | 2 | 2 | 2 |
| Duty cycle [min] | S1 Continuous | S1 continuous | S1 continuous | S2 30 |
| Nominal Flow Rate [l/min / GPM] | 70 / 15,85 | 80 / 21,13 | 100 / 26,42 | 150/ 39,63 |
| Max Pressure [bar / psi] | 2 | 2.5 | 2.5 | 2.5 |
| Dry Suction height [m] | 2 | 2 | 2 | 2 |
| Internal By-Pass | Yes | Yes | Yes | Yes |
| Inlet [BSP/G] | 1" | 1" | 1" | 1" |
| Outlet [BSP/G] | 1" | 1" | 1" | 1" |
| Pump body material | Cast Iron | Cast Iron | Cast Iron | Cast Iron |
| Impeller material | Sintered Steel | Sintered Steel | Sintered Steel | Sintered Steel |
| Vanes material | POM | POM | POM | POM |
| Ring material | HNBR | HNBR | HNBR | HNBR |
| Gasket material | NBR | NBR | NBR | NBR |
| Internal filter | Yes | Yes | Yes | Yes |
| Motor support | Yes | Yes | Yes | Yes |
| Min/Max Temperature [°C] | -20/+50 | -20/+50 | -20/+50 | -20/+50 |
| Max fluid viscosity [cSt] (a 40 °C): | 2 + 5 | 2 + 5 | 2 + 5 | 2 + 5 |
| Allowed fluids | diesel | diesel | diesel | diesel |
| Forbidden fluids | gas, alcohol, water, gasoline, kerosene | | | |
| Loudness at less 1 meter [dB] | < 70 | 85 | 85 | < 90 |
| Net weight [kg] | 8 | 13 | 13 | 16 |
| Gross weight [kg] | 8,5 | 13,5 | 13,5 | 16,5 |



category

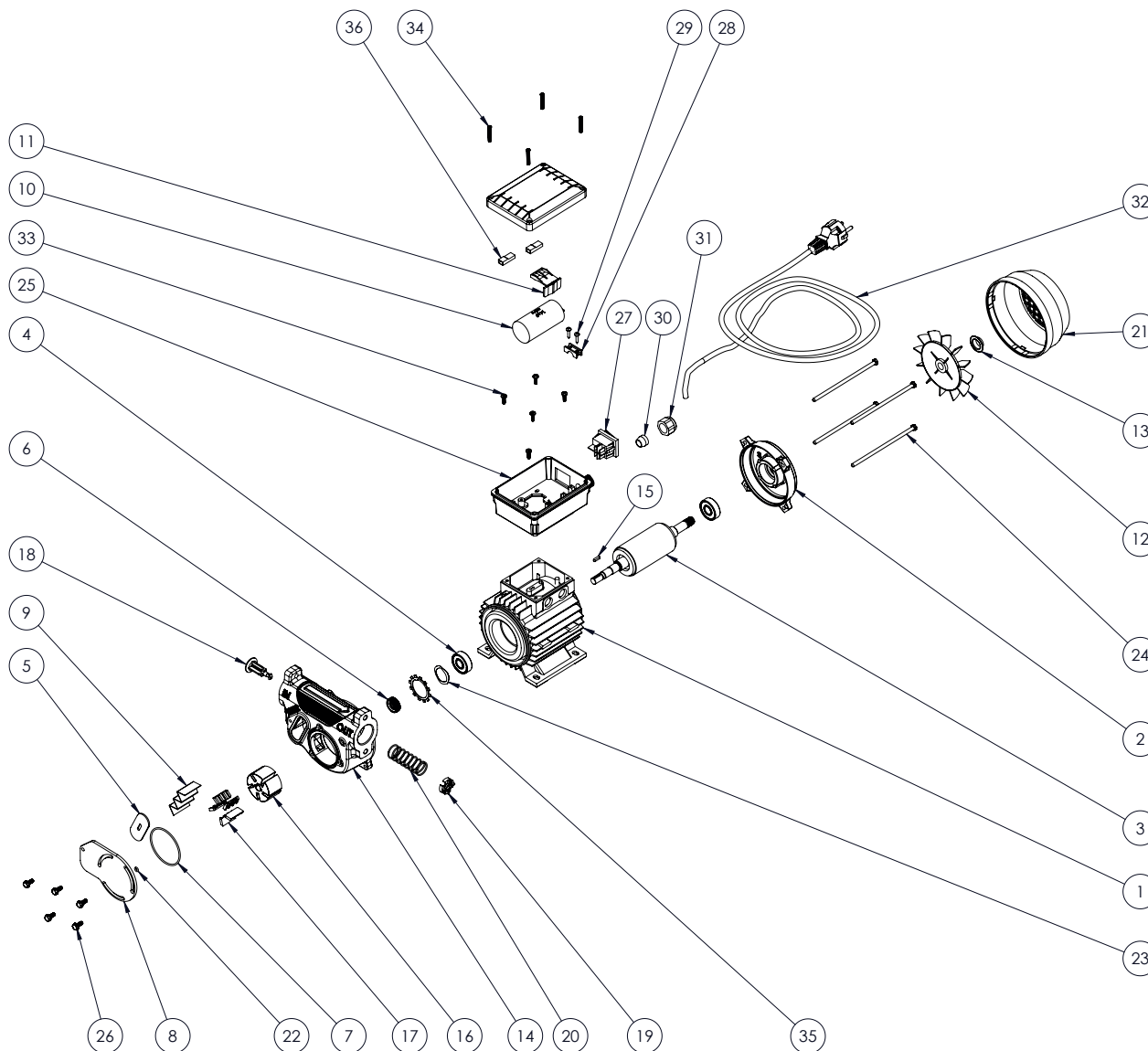
electric pump diesel

model

PA1 70A 230V

MADE IN ITALY 

| | CODE | DESCRIPTION | QTY |
|----|------------------|-----------------------------|-----|
| 1 | ME033 | wound stator p80 | 1 |
| 2 | ME032 | machined shield p.80 | 1 |
| 3 | ME034 | motor shaft p.80 | 1 |
| 4 | 101001600000 | bearing 6201 2rs | 2 |
| 5 | OR037 | filter seal | 1 |
| 6 | OR038 | motor shaft seal | 1 |
| 7 | OR039 | o-ring nbr70 57x2 body pump | 1 |
| 8 | PA018 | swivel locking plate | 1 |
| 9 | PA019 | inox filter 16x49 | 1 |
| 10 | PA020 | capacitor 14µf | 1 |
| 11 | PA024 | capacitor lock | 1 |
| 12 | PA025 | fan fb63 d11 black wo/ring | 1 |
| 13 | PA026 | ring d11 for fan fb63 black | 1 |
| 14 | CP009X | pump body pa 70l x-treme | 1 |
| 15 | PA021 | pin 3x3x12 uni 6604-a | 1 |
| 16 | 61000003 | rotor ø45 | 1 |
| 17 | 71000522 | small vane | 5 |
| 18 | 71000520 | by-pass valve | 1 |
| 19 | PA037 | black reinforced bypass cap | 1 |
| 20 | 16001005 | by-pass spring | 1 |
| 21 | 140250500000 | mec 63 fan cover | 1 |
| 22 | 11010040200 | o-ring 2015 nbr | 1 |
| 23 | VT042 | compensation ring | 1 |
| 24 | 610046000000 | tie rod m5 x 125 | 4 |
| 25 | PA023 | capacitor box | 1 |
| 26 | VT046 | screw te m5x12 flanged | 5 |
| 27 | EL013 | blue switch 22x30 | 1 |
| 28 | 140250300000 | cabl lock | 1 |
| 29 | VT004 | screw tc ø3,5x16 | 2 |
| 30 | 17001011 | cabl gland rubber | 1 |
| 31 | 17001012 | cabl gland ring nut | 1 |
| 32 | 190200000000 | shuko cabl 230v | 1 |
| 33 | VT048 | screw tc 3,5x12 | 5 |
| 34 | VT049 | screw tc 4x25 | 4 |
| 35 | VT050 | security washer | 1 |
| 36 | 190110000000 6.3 | faston cover | 2 |





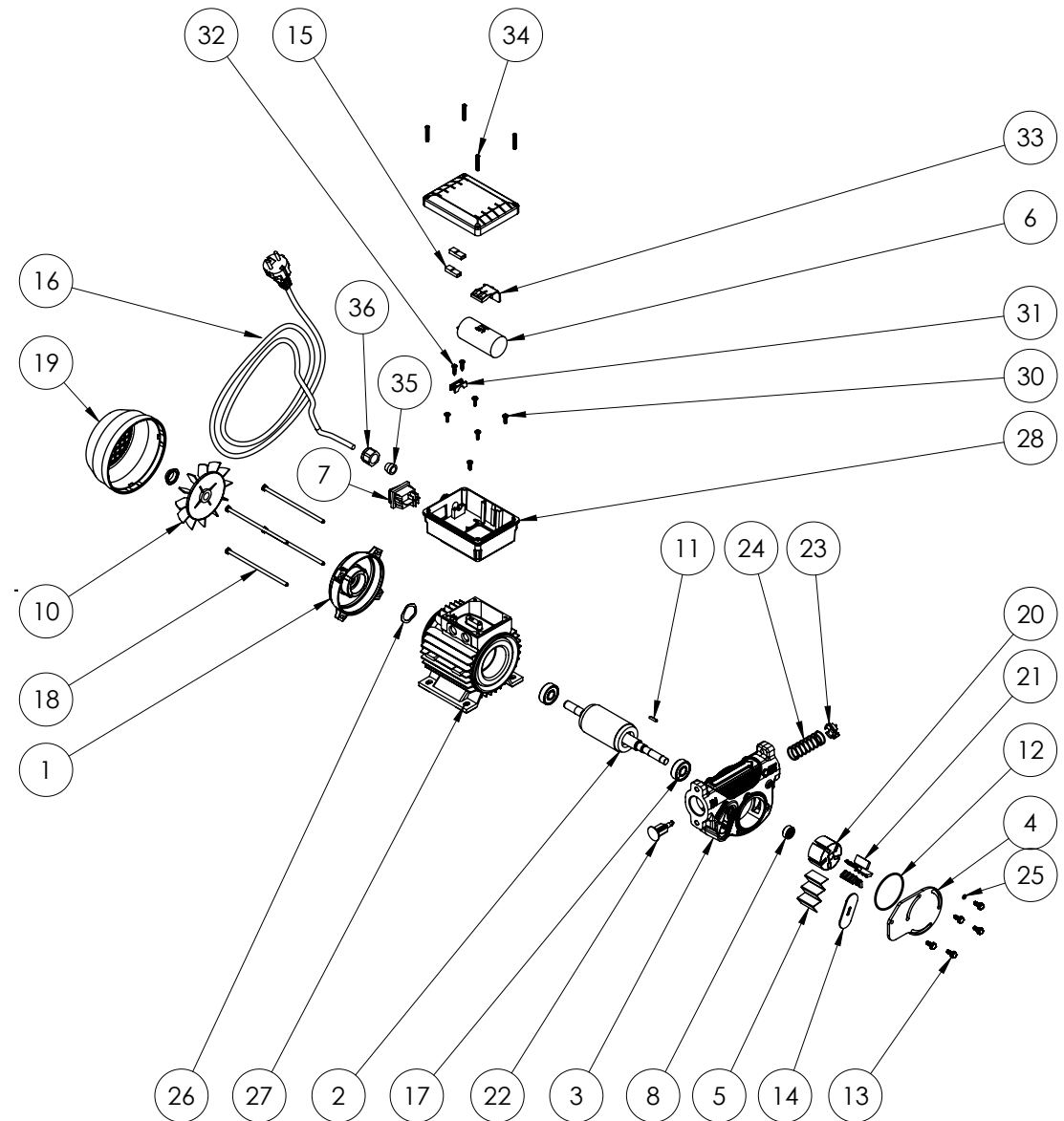
category

electric pump diesel

model

PA1 70A 115V

| | CODE | DESCRIPTION | Q.TY |
|----|--------------|------------------------|------|
| 1 | 15501600000X | MACHINED SHIELD MEC 63 | 1 |
| 2 | 6290150000L | ENGINE SHAFT MEC 63 | 1 |
| 3 | CP009X | BODY PUMP PA 70L | 1 |
| 4 | PA018 | SWIVEL LOCKING PLATE | 1 |
| 5 | PA019 | INOX FILTER 16X49 | 1 |
| 6 | PA020 | CAPACITOR 14µF 450V | 1 |
| 7 | EL013 | BLUE SWITCH 22X30 | 1 |
| 8 | OR038 | SHAFT SEAL Ø19 | 1 |
| 10 | 140250400000 | FUN MEC 63 | 1 |
| 11 | PA021 | PIN 3x3x12 UNI 6604-A | 1 |
| 12 | OR039 | O-RING NBR70 57x2 | 1 |
| 13 | VT046 | SCREW TE M5X12 | 5 |
| 14 | OR037 | FILTER SEAL | 1 |
| 15 | 190110000000 | COPRIFASTON 6.3 | 2 |
| 16 | 190200000000 | SHUKO CABLE 230V | 1 |
| 17 | 101001600000 | BEARING 6201 2RS | 2 |
| 18 | 61004600000 | TIE ROD M5 x 125 | 4 |
| 19 | 140250500000 | FUN COVER MEC 63 | 1 |
| 20 | 610000003 | ROTOR Ø45 | 1 |
| 21 | 71000522 | SMALL VANE | 5 |
| 22 | 71000520 | BY-PASS VALVE | 1 |
| 23 | PA037 | BLACK BYPASS CAP | 1 |
| 24 | 16001005 | BY-PASS SPRING | 1 |
| 25 | 11010040200 | O-Ring 2015 NBR | 1 |
| 26 | VT042 | COMPENSATION RING | 1 |
| 27 | 232204000000 | WOUND STATOR MEC 63 | 1 |
| 28 | PA023 | CAPACITOR BOX | 1 |
| 32 | VT004 | SCREW TC Ø3,5x16 | 2 |
| 33 | 140250300000 | CABLE LOCK | 1 |
| 34 | VT037 | SCREW TC M4x6 UNI 8112 | 5 |
| 35 | PA024 | CAPACITOR LOCK | 1 |
| 36 | VT049 | SCREW TC 4X25 | 4 |





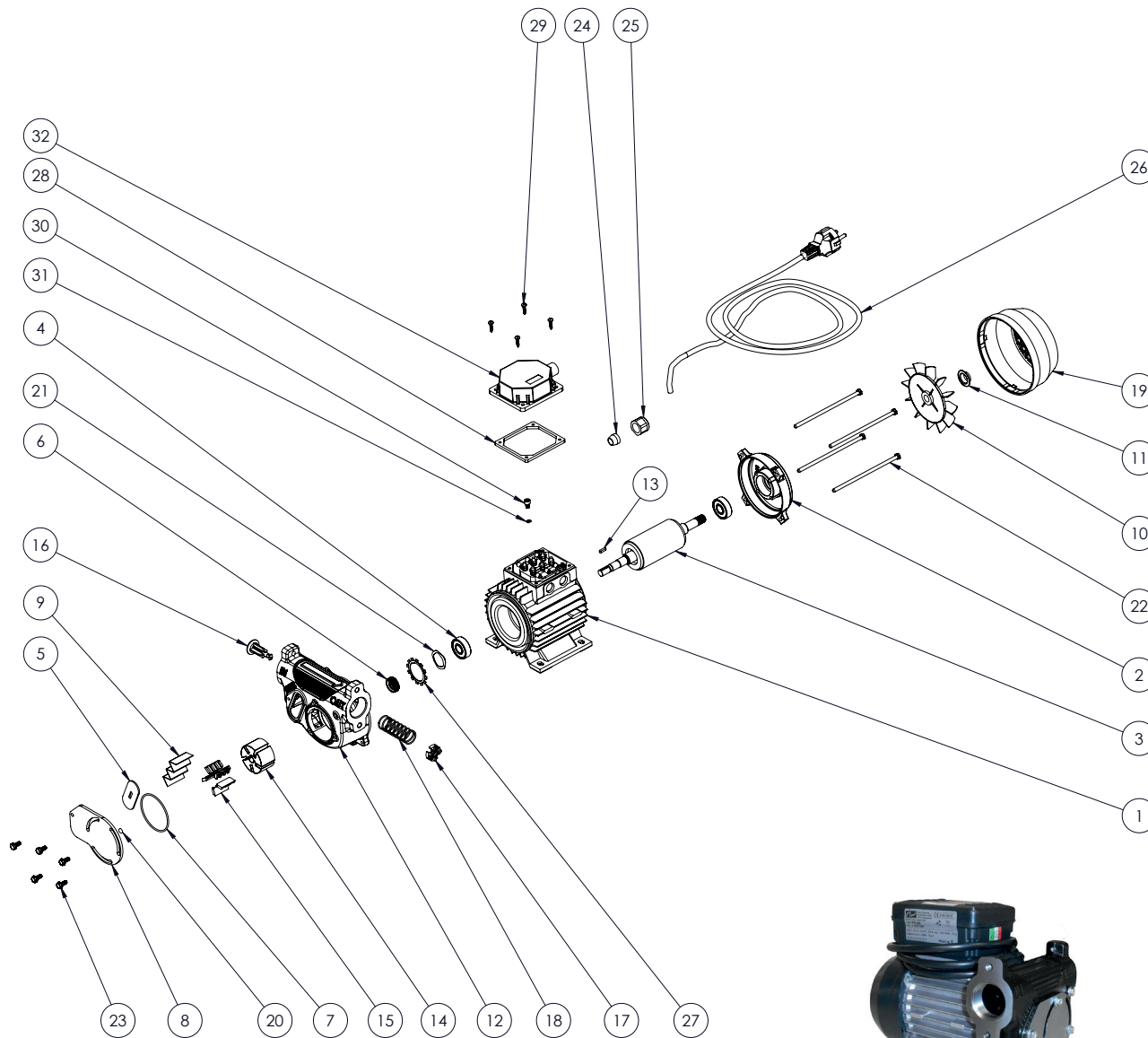
category

electric pump diesel

model

PA1 70A 380V

| | CODE. | DESCRIPTION | QTY |
|----|---------------|------------------------------|-----|
| 1 | ME036 | Stator wrapped MEC 63 | 1 |
| 2 | ME032 | worked shield MEC 63 | 1 |
| 3 | ME037 | Crankshaft MEC 63 | 1 |
| 4 | 101001600000 | Radial ball bearing 6201 2RS | 2 |
| 5 | OR037 | filter seal | 1 |
| 6 | OR038 | inox Seal 10197 TCV 10X19X7 | 1 |
| 7 | OR039 | O-RING NBR70 57x2 | 1 |
| 8 | PA018 | swivel closing plate | 1 |
| 9 | PA019 | inox filter 16x49 | 1 |
| 10 | PA025 | fan MEC 63 | 1 |
| 11 | PA026 | fan ring Ø12 MEC 63 | 1 |
| 12 | CP009X | body pump | 1 |
| 13 | PA021 | Tab 3x3x12 UNI 6604-B | 1 |
| 14 | 61000003 | rotor Ø45 | 1 |
| 15 | 71000522 | vane | 5 |
| 16 | 71000520 | by pass valve | 1 |
| 17 | PA037 | plate | 1 |
| 18 | 16001005 | by pass spring 60-80-100 | 1 |
| 19 | 140250500000 | fan cover MEC 63 | 1 |
| 20 | 11010040200 | O-Ring 2015 NBR | 1 |
| 21 | VT042 | Compensation ring | 1 |
| 22 | 610046000000 | Tie M5 x 125 | 4 |
| 23 | VT046 | screw TE M5X12 | 5 |
| 24 | 17001011 | Grommet cable press | 1 |
| 25 | 17001012 | Cable ring nut | 1 |
| 26 | 1902000000000 | cabl + schuko plug 230V | 1 |
| 27 | VT050 | security washer | 1 |
| 28 | PA032 | seal FV 63 / 71 - 2 | 1 |
| 29 | VT004 | screw TC Cross Ø3,5x16 | 4 |
| 30 | VT002 | screw TCCE M5x8 DIN 7500 E | 1 |
| 31 | 80301400000 | washer Grower Ø4 | 1 |
| 32 | PA031 | board cover MEC63 380V | 1 |
| 33 | PA001 | board 380V | 1 |





category

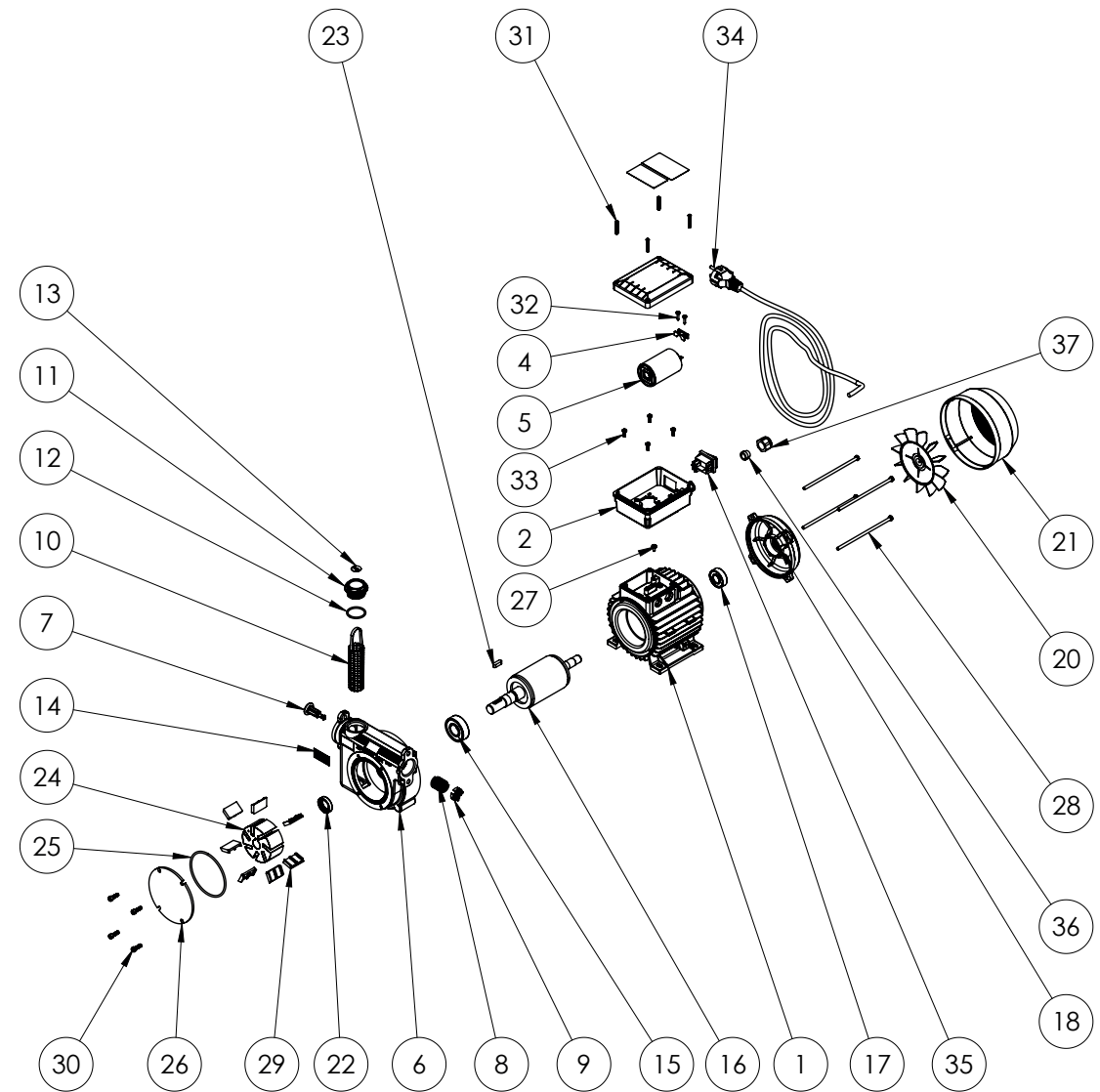
electric pump diesel

model

PA2 80- 100 230V

| CODE. | DESCRIPTION | Q.TY | |
|-------|--------------|----------------------------|---|
| 1 | 64100000000 | Wrapped stator MEC 71 230V | 1 |
| 2 | PA023 | capacitor holder + cap | 1 |
| 4 | 140250300000 | Cable lock | 1 |
| 5 | 190061000000 | Capacitor 25 µF | 1 |
| 6 | - | body pump | 1 |
| 7 | 71000520 | bypass valve | 1 |
| 8 | 16001005 | by pass spring | 1 |
| 9 | PA037 | plate | 1 |
| 10 | 41410000 | inox filter | 1 |
| 11 | 17001094 | cap 1" | 1 |
| 12 | 18001008 | O-Ring 3118 NBR | 1 |
| 13 | 71000587 | label "FILTER" | 1 |
| 14 | 71000546 | label "clear filter" | 1 |
| 15 | 101001880000 | Radial ball bearing | 1 |
| 16 | 62901700000 | crankshaft MEC71 | 1 |
| 17 | 101001700000 | Radial ball bearing | 1 |
| 18 | 15502600000X | worked shield MEC 71 | 1 |
| 19 | 84505000000 | Compensation ring Ø35 | 1 |
| 20 | 140260400000 | fan MEC 71 with ring Ø14 | 1 |
| 21 | 140260500000 | fan holder MEC 71 | 1 |
| 22 | 12001015020 | Sealing ring 20x30x7 SNBR | 1 |
| 23 | 90505050000 | pin 6X6X20 UNI 6604-A | 1 |
| 24 | 61000010 | Rotor Ø72 | 1 |
| 25 | 18001022 | O-Ring 85X3 NBR | 1 |
| 26 | 71000063 | pump holder 80-100 Lt. | 1 |
| 27 | 82301410100 | screw TC Cross M4 x 8 | 1 |
| 28 | 6100450000Z | Tie M5X135 ZnB | 4 |
| 29 | 71000569 | big vane | 7 |
| 30 | 13001007 | screw TCCE M5x16 | 4 |
| 31 | VT049 | screw TC 4X25 UNI 9707 | 4 |
| 32 | VT004 | screw TC cross Ø3,5x16 | 2 |
| 33 | VT048 | screw TC cross 3.5x12 | 4 |
| 34 | 190200000000 | cable + schuko plug 230V | 1 |
| 35 | EL013 | switch 22X30 | 1 |
| 36 | 17001011 | grommet gland | 1 |
| 37 | 17001012 | Cable gland nut | 1 |

| CODE. | DESCRIPTION | |
|-------|-------------|------------------------|
| 6 | 71000060 | body pump 80 L 1"BSPG |
| 6 | 71000079 | body pump 100 L 1"BSPG |





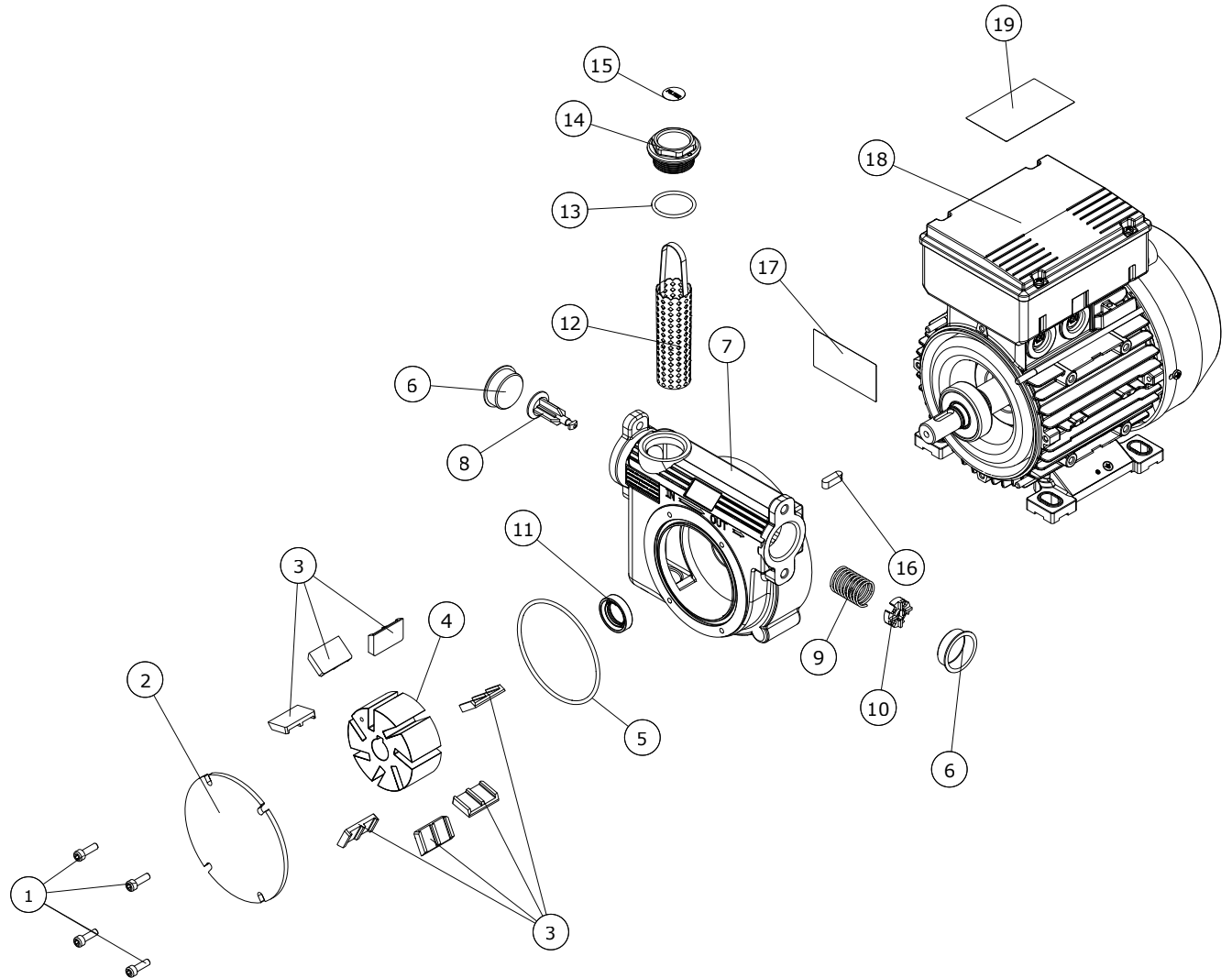
category

electric pump diesel

model

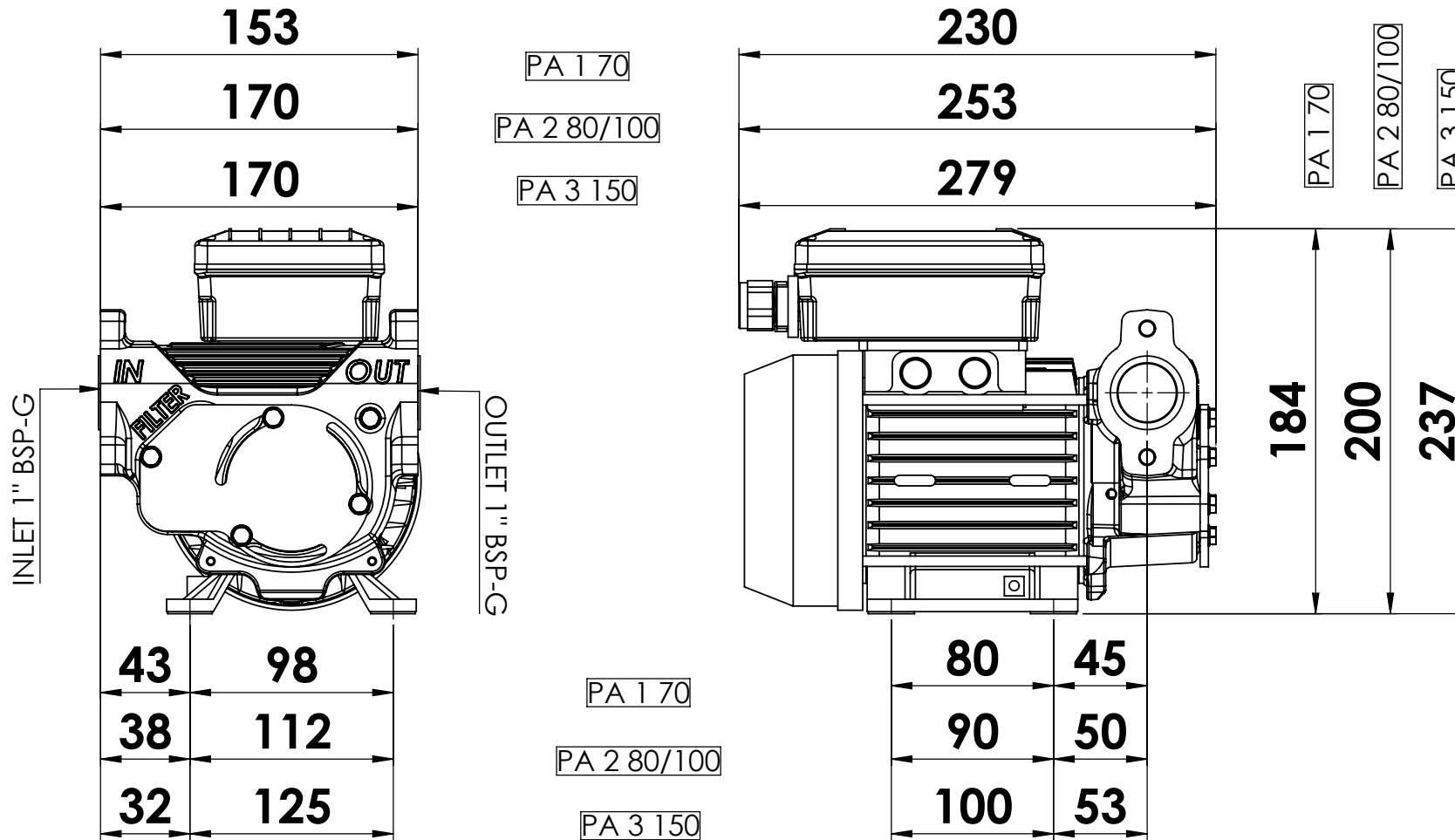
PA3 150 230V

| | CODE | DESCRIPTION | QTY |
|----|--------------|----------------------|-----|
| 1 | 13001007 | screw M5X16 | 4 |
| 2 | 71000063 | pump cover | 1 |
| 3 | 71000569 | large vane | 7 |
| 4 | 61000010 | rotor ø72 | 1 |
| 5 | 18001022 | O-Ring 85X3 NBR | 1 |
| 6 | 163013500000 | protection cap ø31 | 2 |
| 7 | CP004 | pump body 150l | 1 |
| 8 | 71000520 | bypass valve | 1 |
| 9 | 16001005 | bypass spring | 1 |
| 10 | PA037 | plate | 1 |
| 11 | 12001015020 | sealing ring 20x30x7 | 1 |
| 12 | 41410000 | filter | 1 |
| 13 | 18001008 | O-Ring 3118 NBR | 1 |
| 14 | 17001094 | cap 1" | 1 |
| 15 | 71000587 | "filter" label | 1 |
| 16 | 90505050000 | key 6x6x20 | 1 |
| 17 | - | ce label | 1 |
| 18 | ME002 | motor 150l | 1 |
| 19 | 71000653 | "danger" label | 1 |





PA



PA170



PA280-100

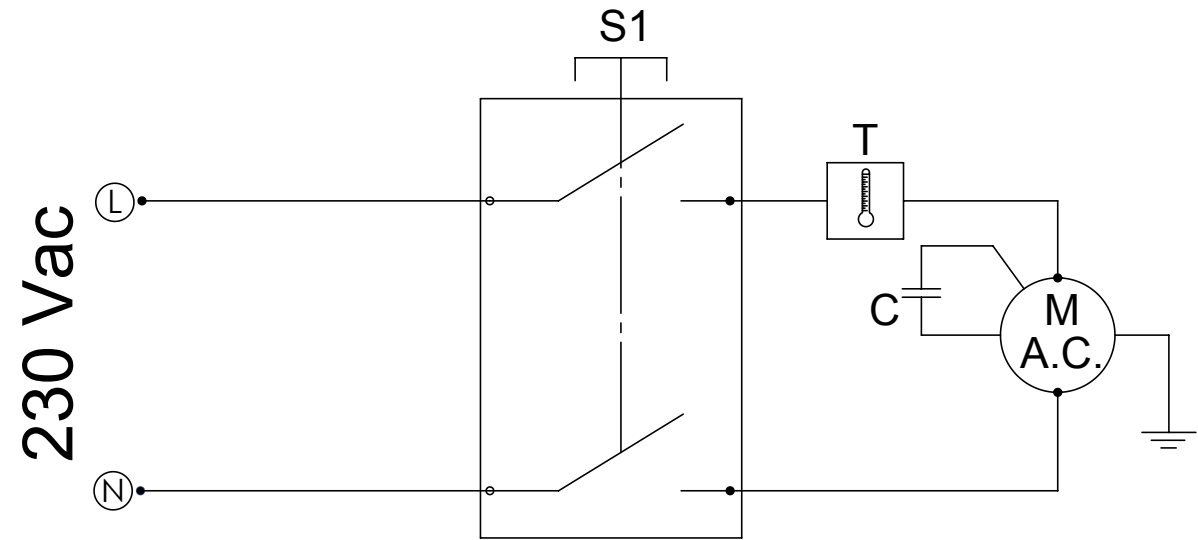


PA3150

tutte le dimensioni espresse in mm - all dimensions are in mm



PA1 70



schema elettrico

wiring diagram

schaltpläne

schémas électriques

esquemas eléctricos

esquemas elétricos

электрические схемы



S:1 interruttore ON-OFF
 M: motore
 T: protezione termica
 C: condensatore



S1: interruptor ON-OFF
 M: motor
 T: protección térmica
 C: condensador



S1: ON-OFF switch
 M: Motor
 T: Circuit Breaker
 C: Capacitor



S1: Interruptor ON-OFF
 M: Motor
 T: Proteção Térmica
 C: condensador



S1: ON - OFF Schalter
 M: Motor
 T: Temperaturschutz
 C: Kondensator



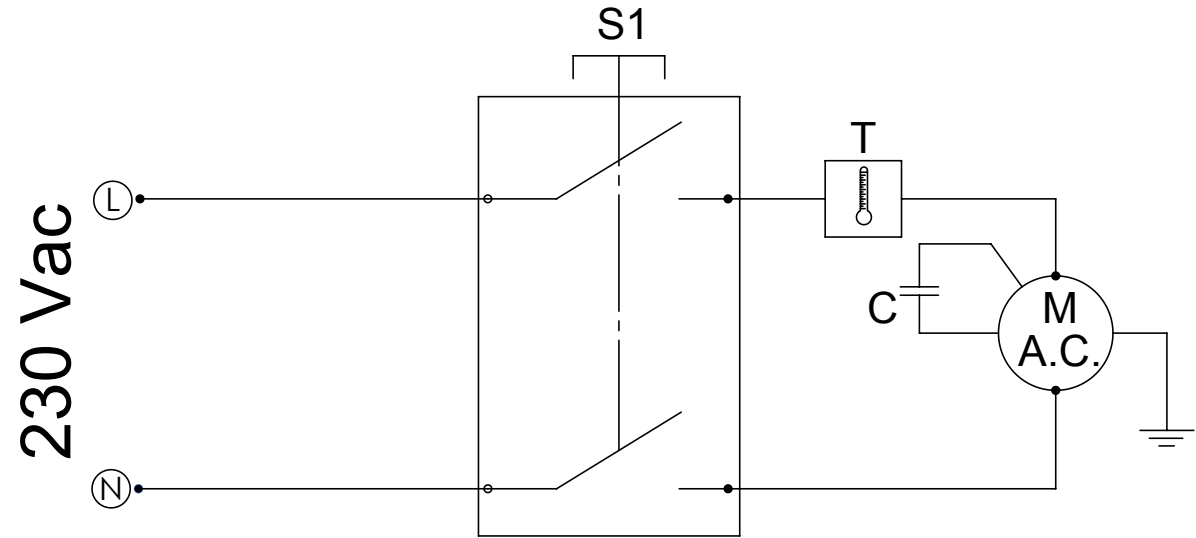
S1: переключатель ВКЛ-ВЫКЛ
 M: Двигатель
 T: Термореле
 C: Конденсатор



S1: interrupteur ON-OFF
 M: moteur
 T: protection Thermique
 C: condensateur



PA2 80



schema elettrico

wiring diagram

schaltpläne

schémas électriques

esquemas eléctricos

esquemas elétricos

электрические схемы



S:1 interruttore ON-OFF
 M: motore
 T: protezione termica
 C: condensatore



S1: interruptor ON-OFF
 M: motor
 T: protección térmica
 C: condensador



S1: ON-OFF switch
 M: Motor
 T: Circuit Breaker
 C: Capacitor



S1: Interruptor ON-OFF
 M: Motor
 T: Proteção Térmica
 C: condensador



S1: ON - OFF Schalter
 M: Motor
 T: Temperaturschutz
 C: Kondensator



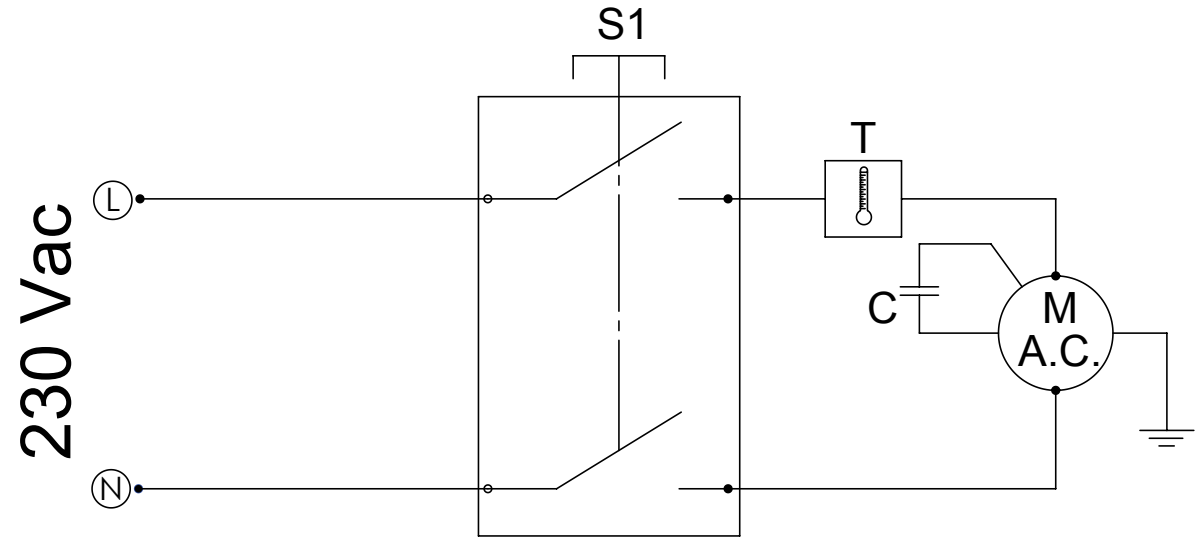
S1: переключатель ВКЛ-ВЫКЛ
 M: Двигатель
 T: Термореле
 C: Конденсатор



S1: interrupteur ON-OFF
 M: moteur
 T: protection Thermique
 C: condensateur



PA2 100



schema elettrico

wiring diagram


schaltpläne


schémas électriques


esquemas eléctricos


esquemas elétricos


электрические схемы


 S:1 interruttore ON-OFF
M: motore
T: protezione termica
C: condensatore


 S1: interruptor ON-OFF
M: motor
T: protección térmica
C: condensador

 S1: ON-OFF switch
M: Motor
T: Circuit Breaker
C: Capacitor

 S1: Interruptor ON-OFF
M: Motor
T: Proteção Térmica
C: condensador

 S1: ON - OFF Schalter
M: Motor
T: Temperaturschutz
C: Kondensator

 S1: переключатель ВКЛ-ВЫКЛ
M: Двигатель
T: Термореле
C: Конденсатор

 S1: interrupteur ON-OFF
M: moteur
T: protection Thermique
C: condensateur



PA3 150



schema elettrico

wiring diagram

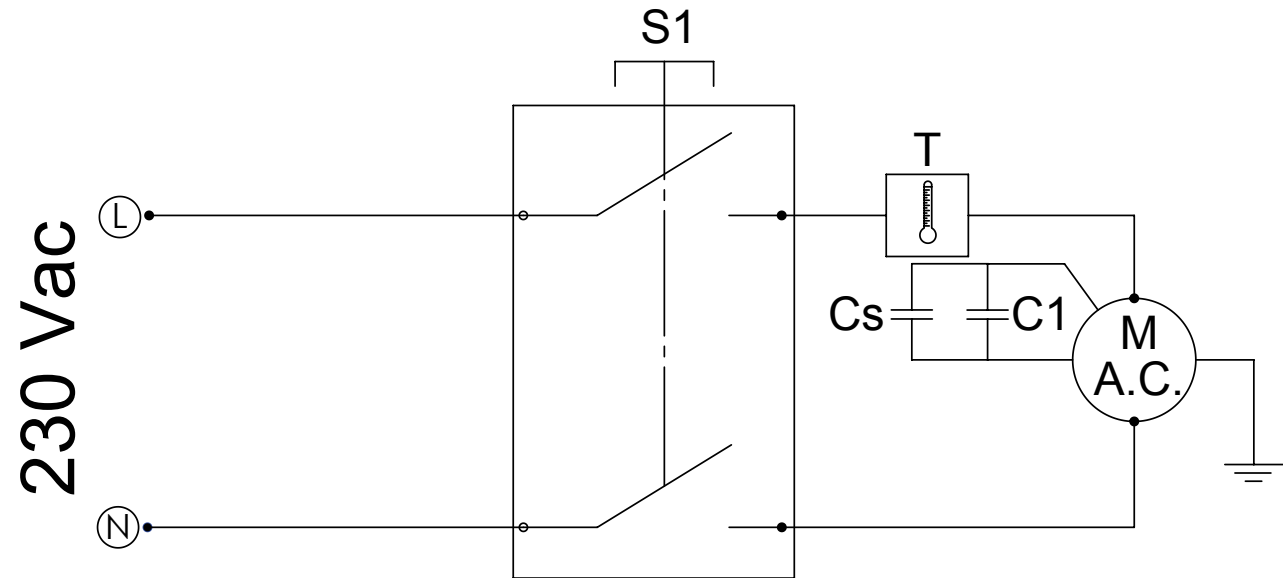
schaltpläne


schémas électriques

esquemas eléctricos


esquemas elétricos


электрические схемы





 S:1 interruttore ON-OFF
 M: motore
 T: protezione termica
 C1: Condensatore di fase
 Cs: Condensatore di start


 S1: ON-OFF switch
 M: Motor
 T: Circuit Breaker
 C1: Phase capacitor
 Cs: Start capacitor

 S1: ON - OFF Schalter
 M: Motor
 T: Temperaturschutz
 C1: Phasencondensator
 Cs: Startkondensator

 S1: interrupteur ON-OFF
 M: moteur
 T: protection Thermique
 C1: Condensateur de phase
 Cs: Condensateur de marche

 S1: interruptor ON-OFF
 M: motor
 T: protección térmica
 C1: Condensador de fase
 Cs: Condensador de start

 S1: Interruptor ON-OFF
 M: Motor
 T: Proteção Térmica
 C1: Condensador de fase
 Cs: Condensador de arranque

 S1: переключатель ВКЛ-ВЫКЛ
 M: Двигатель
 T: Термореле
 C1: Конденсатор фазы
 Cs: Конденсатор запуска



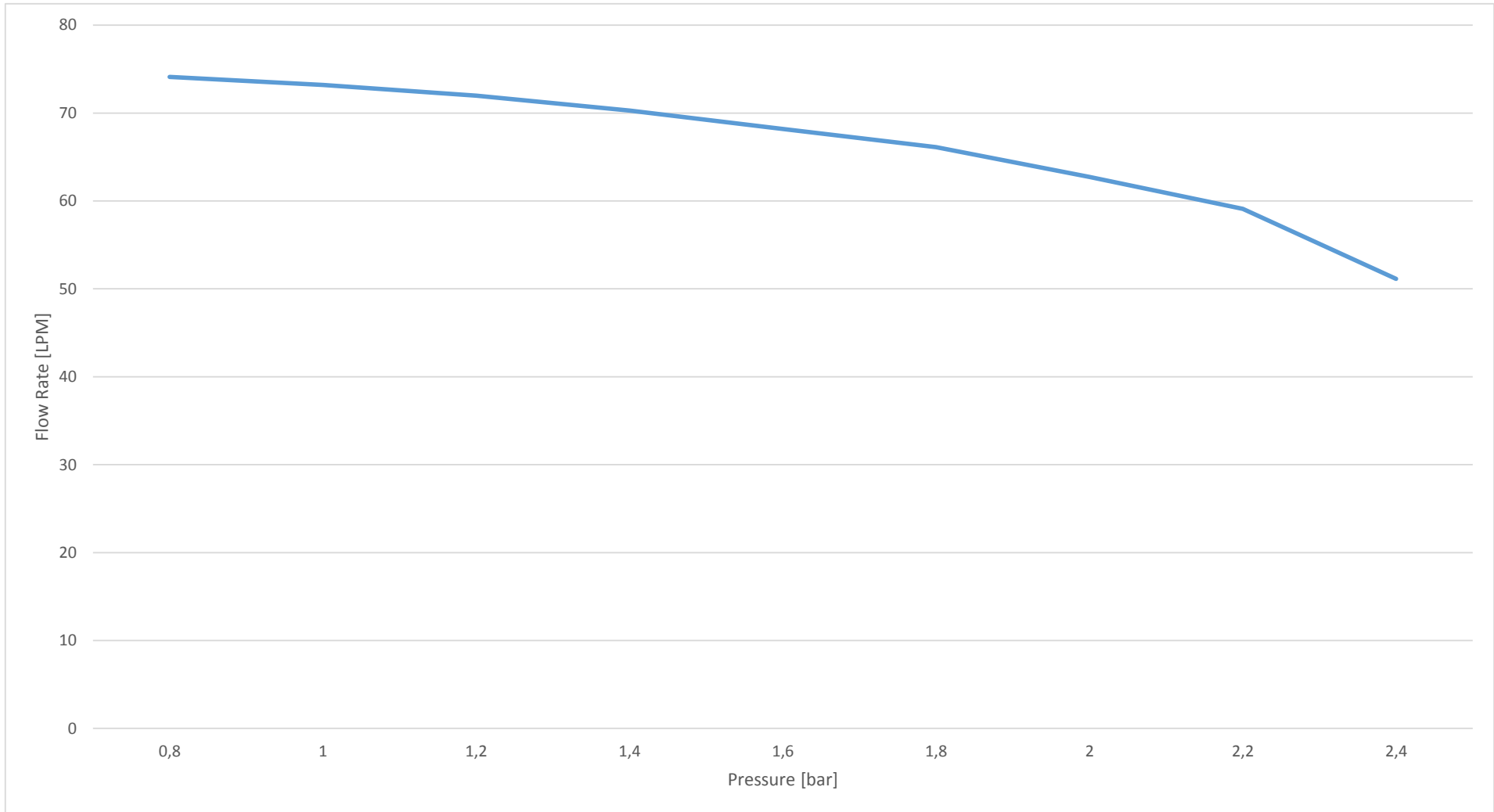
documento / document

prodotto / product

MADE IN ITALY 

curva di portata / flow rate curve


PA1 70 230V 50Hz





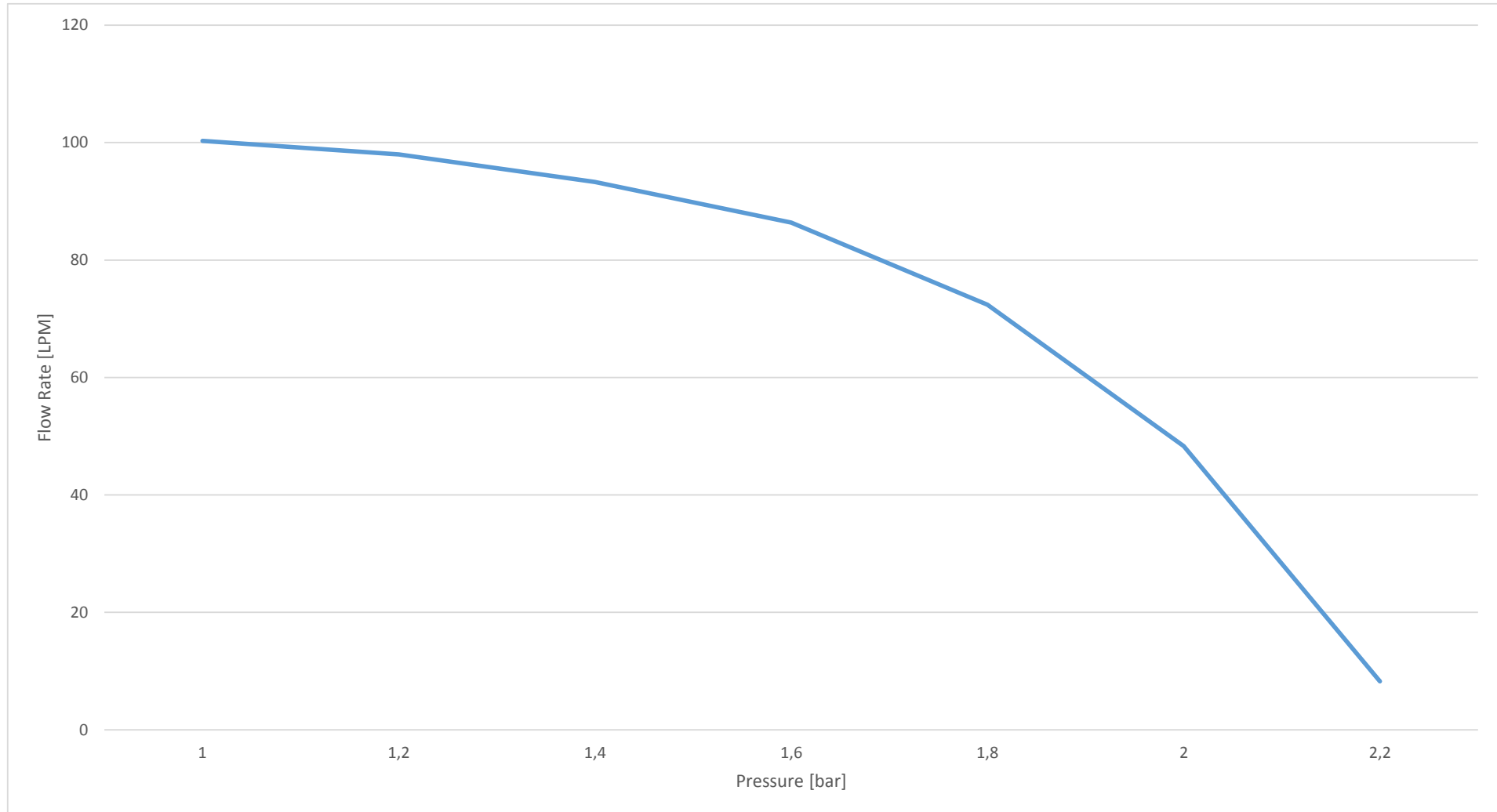
documento / document

prodotto / product

MADE IN ITALY 

curva di portata / flow rate curve

PA2 100 230V 50Hz





documento / document

prodotto / product

MADE IN ITALY 

curva di portata / flow rate curve

PA3 150 230V 50Hz

